



44 Ashcroft Place Epsom Road, Leatherhead, KT22 8RJ

Price Guide £299,950

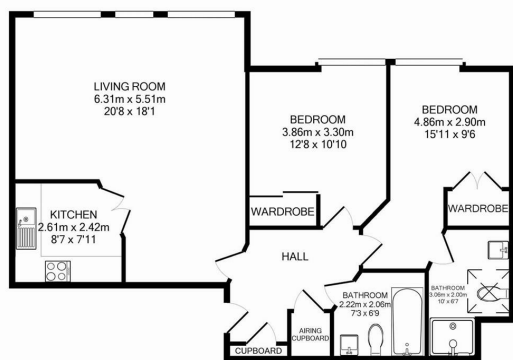
- LARGE SECOND FLOOR (TOP) APARTMENT
- 2 BEDROOMS
- VERY SPACIOUS LOUNGE/DINING ROOM
- RESIDENTS LOUNGE AND GUEST ROOM
- RESIDENTS PARKING AND GARDENS
- LIFT SERVICE
- 2 BATHROOMS
- QUALITY FITTED KITCHEN
- GATED ENTRANCE AND ENTRY PHONE
- END OF CHAIN

A particularly spacious top floor apartment, purpose built in 2007 exclusively for the over 60's set behind a gated entrance and set in beautifully landscaped grounds with lit paths, well maintained gardens and parking whilst within 450 yards from the High Street.

A spacious hall with coats cupboards and airing cupboard leads through double doors to a large sitting/dining room which features glazed double doors into fitted kitchen with a comprehensive range fitted units and integrated appliances. The master bedroom has a fitted double wardrobe and en suite shower room, the second double bedroom enjoys a luxury bathroom which is just across the hall.

Residents benefit from communal facilities including a large resident's lounge (see photo below, with residents own organised activities).

There is a 24hr Telecare Service can be installed on request at no cost and a part time sales manager (currently three mornings a week). Residents can book in advance for a small charge a guest suite for use by visitors. There is also a communal buggy store with charging points.



Total Approx. Floor Area 77.3 Sq.M. (832 Sq.Ft.)  
Measurements are approximate. Not to scale. Illustrative purposes only.  
Made with Metropix 62013



**Tenure**  
**Lease**  
**Service Charge**  
**Ground Rent**  
**EPC**  
**Council Tax Band**

Leasehold  
999 years from 01.01.06  
£3,156 (01.01.24 - 31.12.24)  
£295 pa increasing £295 every 25 years  
C  
E



1-3 Church Street, Leatherhead, Surrey, KT22 8DN

**Tel:** 01372 360078 **Email:** leatherhead@patrickgardner.com

**www.patrickgardner.com**

These particulars, whilst believed to be accurate are set out as a general outline only for guidance and do not constitute any part of an offer or contract. Intending purchasers should not rely on them as statements of representation of fact, but must satisfy themselves by inspection or otherwise as to their accuracy. No person in this firms employment has the authority to make or give any representation or warranty in respect of the property.